



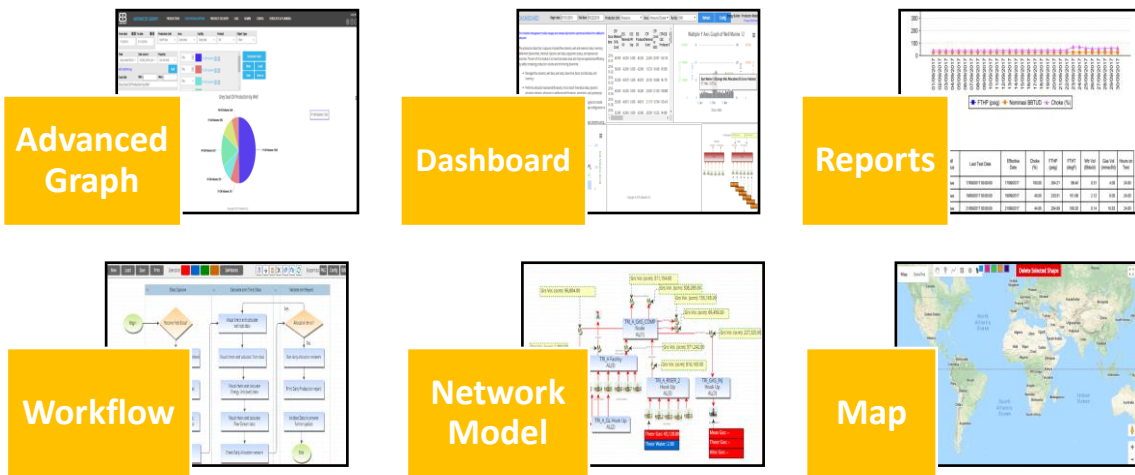
Data Visualization Tools for Hydrocarbon Accounting or Production Data Management with EnergyBuilder™

eDataViz, LLC
4600 Highway 6 North
Houston, Texas, USA
Information@edataviz.com
<https://www.edataviz.com>

Data Visualization Tools

Data Visualization Tools

EnergyBuilder™ provides a wide range of tools that can be used to create numerous visualization reports. These tools include a modeling tool that allow users to create production models for facilities, processes and more. Other tools include an advanced plotting tool and an automated task manager.



Dashboard

In most organizations, different roles require different information, so we designed our dashboard to allow users to display information relevant to their role.

Reports

The report functionality can run pre-programmed jasper reports. In addition, eDataViz has the resources needed to design and develop Tableau and Spotfire reports.

Task Manager

The task manager function allows users to create specific tasks.

Advanced Graph

The advanced graph function is an all-purpose plotting tool.



Data Visualization Tools

Network Model

The network model tool allows users to create and host models such as facilities and processes. Additionally, it has the capacity to map any objects and/or data previously stored in **Energy Builder** or the Historian server.

Data View

The data view function allows users to directly query data from the database without having to leave the application to manually search through an extensive data list. The system allows the data to be exported to Excel.

Storage Display

The storage display function allows users to graph storage (tanks) capacity, monitor for safe levels, and look at past, current and future stock levels. (**Note:** past and current stock levels are actual data from the database.)

Choke Model

The choke model function allows user to identify constraints or bottlenecks in the production processing chain.

Workflow

The work flow function allows users to draw flow diagrams that accurately represent how work is being carried out in a production unit. This function contains individual tasks that let the user configure tasks while setting up the workflow. While creating the diagram, the workflow model actively displays the current stage as well as the stage it will be finished and provides notification to relevant personnel if the job needs attention.

Map

The map function allows users to look at the production data of a physical location by clicking in the map. Our software is integrated with Google Map.

Need more information?

Contact us at information@edataviz.com for more information about our Hydrocarbon Accounting or Allocation solution.



Efficient, Effective, Effortless...EnergyBuilder™